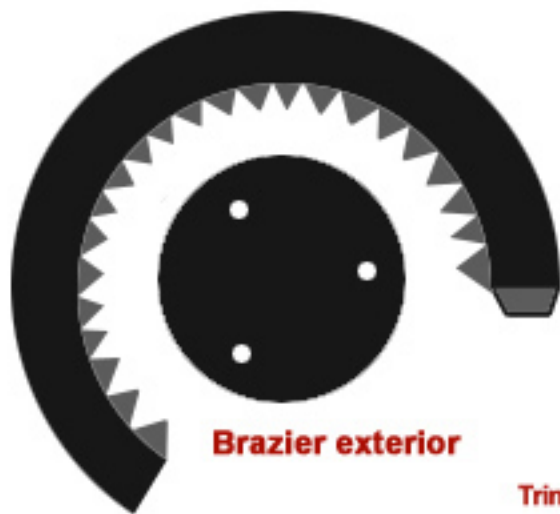
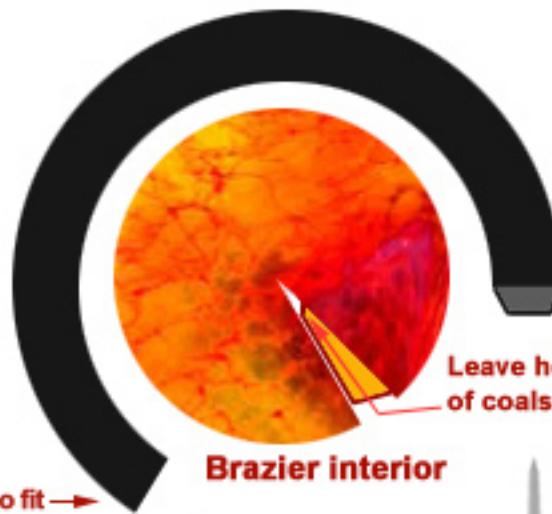


**DIORAMA FOR ROBIN DAY'S HANGING CAGE MODEL by CHRIS SPITLER  
(Based on Aurora's Monster Scenes Kit) This Version ©2006**



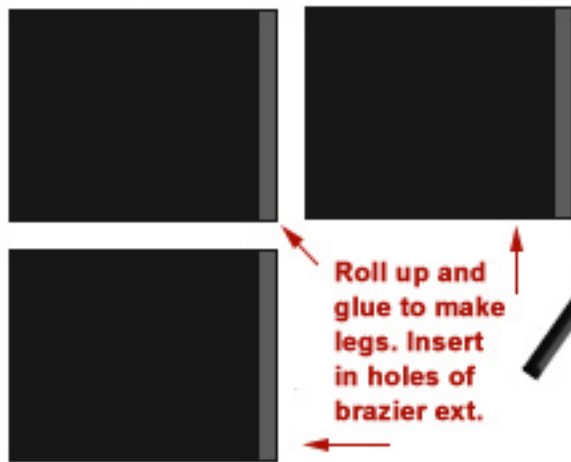
**Brazier exterior**



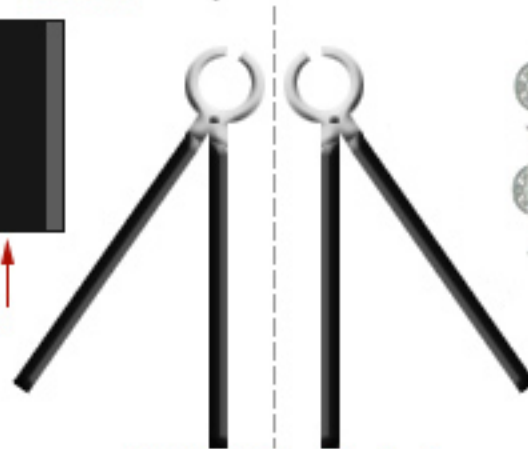
**Brazier interior**

Leave hole in center of coals to insert sword

Trim to fit →



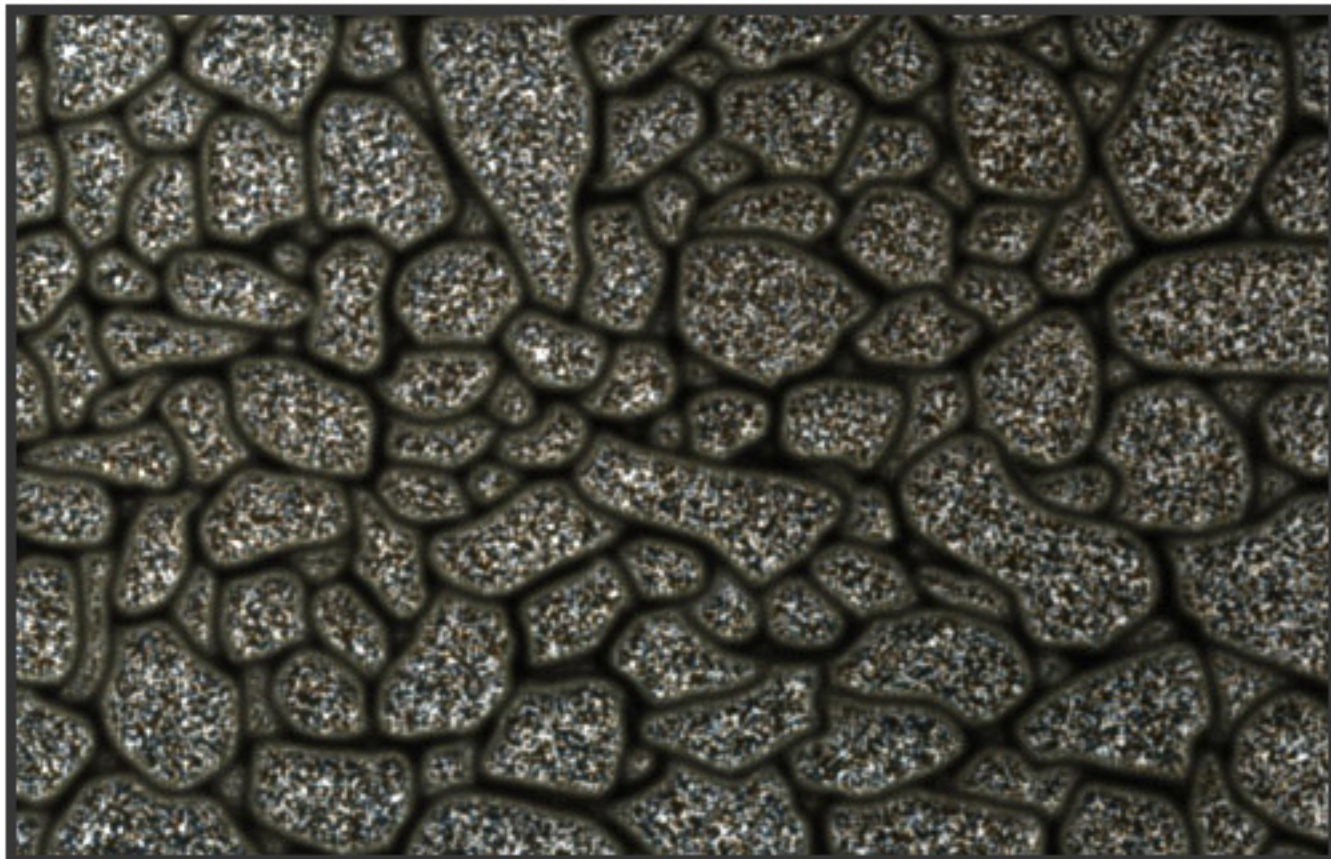
Roll up and glue to make legs. Insert in holes of brazier ext.



Fold in half and cut out



Cut out pieces and build up layers



Cut out and glue down to thick cardboard to create base

"Clan MacLeaod" sword design used with permission of Noel Navarro